



SPECIFICATIONS

Housing: Die cast aluminum with internal rib design to prevent wall distortion or stress sagging; built-in hinge. Finished architectural bronze. See finish note.

Door Assembly: Die cast aluminum, clear tempered lens, silicone caulked to frame plus eight hold down clips, integral silicone door frame gasket to complete lifetime seal. Finished architectural bronze. See finish note.

Reflector: Computer generated two piece semi-specular aluminum for maximum efficiency.

Ballast: Philips QL induction high frequency electronic ballast 85W 120 or 200V—277V. Contact factory for other voltages.

Lamp: Philips QL induction electrodeless fluorescent lamp with average rated life of 100,000 hours.

Arm Mount: 6" or 12" long extruded aluminum arm with gasketing for pole and fixture. Finished same as housing.

Yoke Mounting: Steel adjustable yoke. Finished same as housing.

Adjustable Slip Fitter: Cast aluminum. Fits over 2-3/8" pole or tenon with locking rotor plate from 90° to 180°. Enclosed and gasketed internal chamber. Finished same as housing.

Wall Mount Bracket: One-piece cast aluminum bracket/arm assembly with access plate for wire inspection. Cast aluminum, wall mounting plate with 1/4" thick neoprene gasket. Quick disconnect wiring harness. **EZ5 Mounting System** allows the contractor to install the fixture in 5 minutes or less. Finished same as housing.

Finish: Detergent cleaned with iron phosphate and chromic acid rust inhibitor, chip resistant chip resistant powder urethane polyester coating, electrostatic applied and baked. Standard color architectural bronze (AB).

Labels: I.B.E.W. labeled, ETL / CETL listed. Suitable for wet location.

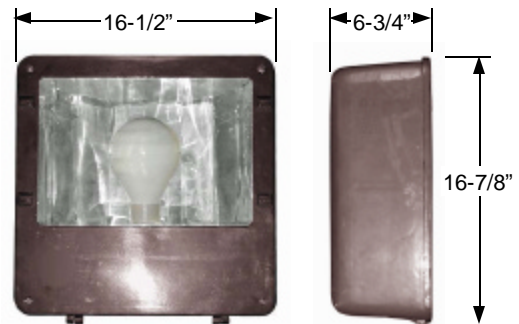
Fixture Warranty: The fixture mechanics are guaranteed to be free from defective material and workmanship, under normal installation and operating conditions, for five years from date of shipment from the factory. See General Terms and Conditions.

Photometric Information: Contact factory.

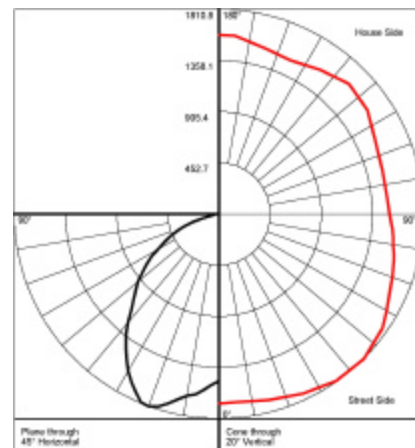
SPECIFICATIONS SUBJECT TO CHANGE WITHOUT NOTICE



DIMENSIONS



PHOTOMETRICS



3254 North Kilbourn Avenue Chicago, Illinois 60641-4505
 Phone: 773-427-7000 Fax: 800-217-1260 www.escolighting.com

A Woman-Owned Business

Established 1975

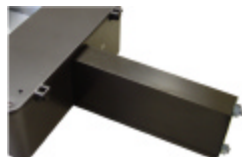




4 MOUNTING OPTIONS



Adjustable yoke mount.
 Suffix catalog number
 with **YAB**.



Extruded aluminum arm.
 Suffix catalog number
 with **AAB 6"** or **AAB 12"**.



Adjustable slip fitter.
 Suffix catalog number
 with **SAB**.



Cast aluminum wall mount.
 Suffix catalog number
 with **WAB**.

HOW TO ORDER

Catalog Number	Lamps	Initial Lumens	Color Temp	CRI	Voltage Suffix
FLQ83016	85W	6,000	3000	80	1= 120V
FLQ84016	85W	6,000	4000	80	2= 208V
FLQ85016	85W	6,000	5000	80	3= 240V 4= 277V

EXAMPLE ORDER NUMBER: FLQ83016SAB4= QL induction 85 watt lamp, 3000k, with adjustable slip fitter, 277 volt.

ACCESSORIES



Fuse and Fuse Holder
 Add suffix "F"
 to order number.



Photo Control
 Add suffix "PC"
 to order number.



3254 North Kilbourn Avenue Chicago, Illinois 60641-4505
 Phone: 773-427-7000 Fax: 800-217-1260 www.escolighting.com

A Woman-Owned Business
 Established 1975

