



SPECIFICATIONS

Housing: Die cast aluminum with internal rib design to prevent wall distortion or stress sagging; built-in hinge. Finished architectural bronze. See finish note.

Door Assembly: Die cast aluminum, clear tempered lens, silicone caulked to frame plus eight hold down clips, integral silicone door frame gasket to complete lifetime seal. Finished architectural bronze. See finish note.

Reflector: Computer generated one-piece semi-specular aluminum for maximum efficiency.

Ballast: Osram Sylvania ICETRON high frequency electronic ballast 100W or 150W, 120—277V. Contact factory for other voltages.

Lamp: Osram Sylvania ICETRON electrodeless fluorescent lamp with average rated life of 100,000 hours.

Arm Mount: 6" or 12" long extruded aluminum arm with gasketing for pole and fixture. Finished same as housing.

Yoke Mounting: Steel adjustable yoke. Finished same as housing.

Adjustable Slip Fitter: Cast aluminum. Fits over 2" pole or tenon with locking rotor plate from 90° to 180°. Enclosed and gasketed internal chamber. Finished same as housing.

Wall Mount Bracket: One piece cast aluminum wall-mount with 1/4" neoprene gasket for sealing to wall. Finished same as housing.

Finish: Detergent cleaned with iron phosphate and chromic acid rust inhibitor, resistant chip resistant powder urethane polyester coating, electrostatic applied and baked. Standard color architectural bronze (AB).

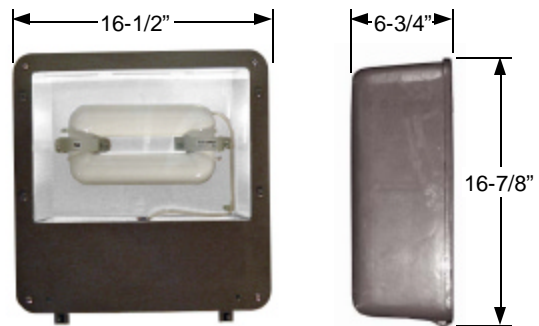
Labels: I.B.E.W. labeled, ETL / CETL listed. Suitable for wet location.

Fixture Warranty: The fixture mechanics are guaranteed to be free from defective material and workmanship, under normal installation and operating conditions, for five years from date of shipment from the factory. See General Terms and Conditions.

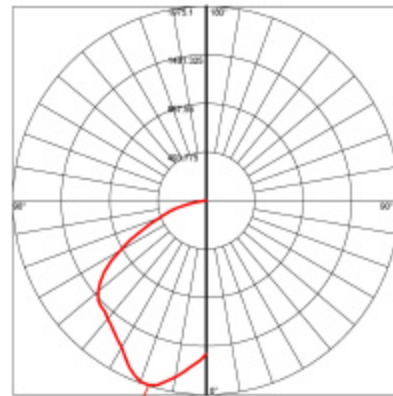
Photometric Information: Contact factory.



DIMENSIONS



PHOTOMETRICS



SPECIFICATIONS SUBJECT TO CHANGE WITHOUT NOTICE



3254 North Kilbourn Avenue Chicago, Illinois 60641-4505
 Phone: 773-427-7000 Fax: 800-217-1260 www.escolighting.com

A Woman-Owned Business
 Established 1975

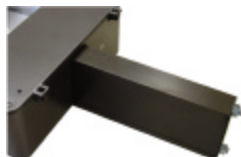




4 MOUNTING OPTIONS



Adjustable yoke mount.
 Suffix catalog number
 with **YAB**.



Extruded aluminum arm.
 Suffix catalog number
 with **AAB 6"** or **AAB 12"**.



Adjustable slip fitter.
 Suffix catalog number
 with **SAB**.



Cast aluminum wall mount.
 Suffix catalog number
 with **WAB**.

HOW TO ORDER

| Catalog Number | Lamps | Initial Lumens | Ballast | Color Temp |
|----------------|-------|----------------|----------|------------|
| FLi33516 | 70W | 6,200 | ICE/100W | 3500 |
| FLi34116 | 70W | 6,200 | ICE/100W | 4100 |
| FLi35016 | 70W | 5,950 | ICE/100W | 5000 |
| FLi43516 | 100W | 8,000 | ICE/100W | 3500 |
| FLi44116 | 100W | 8,000 | ICE/100W | 4100 |
| FLi45016 | 100W | 7,600 | ICE/100W | 5000 |
| FLi53516 | 100W | 12,000 | ICE/150W | 3500 |
| FLi54116 | 100W | 12,000 | ICE/150W | 4100 |
| FLi55016 | 100W | 11,650 | ICE/150W | 5000 |

EXAMPLE ORDER NUMBER: FLi43516SAB = ICETRON induction 100 watt lamp,
 3500k, with adjustable slip fitter.

ACCESSORIES



Fuse and Fuse Holder
 Add suffix "F"
 to order number.



Photo Control
 Add suffix "PC"
 to order number.



3254 North Kilbourn Avenue Chicago, Illinois 60641-4505
 Phone: 773-427-7000 Fax: 800-217-1260 www.escolighting.com

A Woman-Owned Business
 Established 1975

