



Municipality SCR Series

Surface Mount Luminaire

OSRAM SYLVANIA ICETRON® Lamp

Philips QL Induction Lamp

Specifications

Housing

Die formed .063" aluminum construction. Finished inside and out. Mounting collar provided on surface mount for easy fixture installation (see detail). See finish note.

Reflector

.040" Aluminum. Finished high gloss white (90% reflectance) polyester powder coat. See finish note.

Door Frame

One piece die formed .63" aluminum with (6) captive fasteners and two stainless steel safety wires. See Finish Note.

Trunion Mount Option

14 GA. (.074") Galvanized steel. 180° Pivot and lock into position. See finish note.

Lens

Prismatic C73 tempered glass, clear tempered glass, drop polycarbonate or acrylic. All lenses silicone caulked into door frame.

Ballast

OSRAM SYLVANIA QUICTRONIC® high frequency electronic ballast. Operating in a range of 120 to 277 volts 50 or 60 Hz.

Or

Philips QL induction high frequency electronic ballast. 165W Operating in a range of 200 to 277 volts, 55W and 85W 120 volt, 50 or 60 Hz. Contact factory for other voltages.

Lamp

OSRAM SYLVANIA ICETRON® inductively coupled electrodeless fluorescent lamp with average rated life 100,000 hours.

Or

Philips QL induction electrodeless fluorescent lamp with average rated life 100,000 hours.

Finish

Detergent cleaned with iron phosphate and chromic acid rust inhibitor. Chip resistant TGIC powder urethane polyester coating, electrostatic applied and baked. Sky white. Other colors available.

Labels

U/L, CU/L listed, suitable for wet location, I.B.E.W. assembled and labeled.

Photometric Information

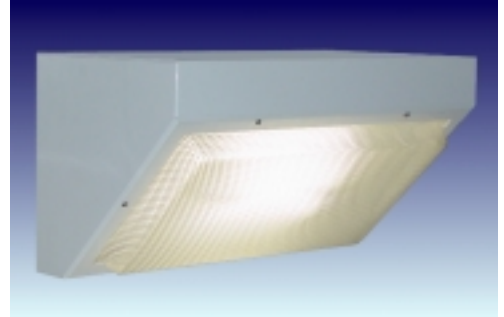
Contact factory or visit www.escolighting.com.

SPECIFICATIONS SUBJECT TO CHANGE WITHOUT NOTICE

ICETRON is a trademark and product of OSRAM SYLVANIA, Inc.
 QUICTRONIC is a registered trademark of OSRAM GmbH, used under license.
 SYLVANIA is a registered trademark of OSRAM SYLVANIA, Inc.



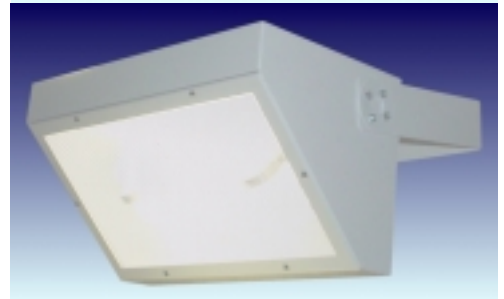
Prismatic drop polycarbonate lens. Wall or ceiling mount. With mounting collar.



Collar mount detail.



Prismatic C73 tempered glass lens. Shown with trunion mount option.



Clear tempered glass lens. Shown with trunion mount option.



ICETRON® lamp and ballast system.



QL induction lamp and ballast system.

3254 North Kilbourn Avenue Chicago, Illinois 60641-4505 03/05
 Phone 773-427-7000 Fax 800-217-1260 www.escolighting.com



Municipality SCR Series

Surface Mount Luminaire
OSRAM SYLVANIA ICETRON® Lamp
Philips QL Induction Lamp

HOW TO ORDER

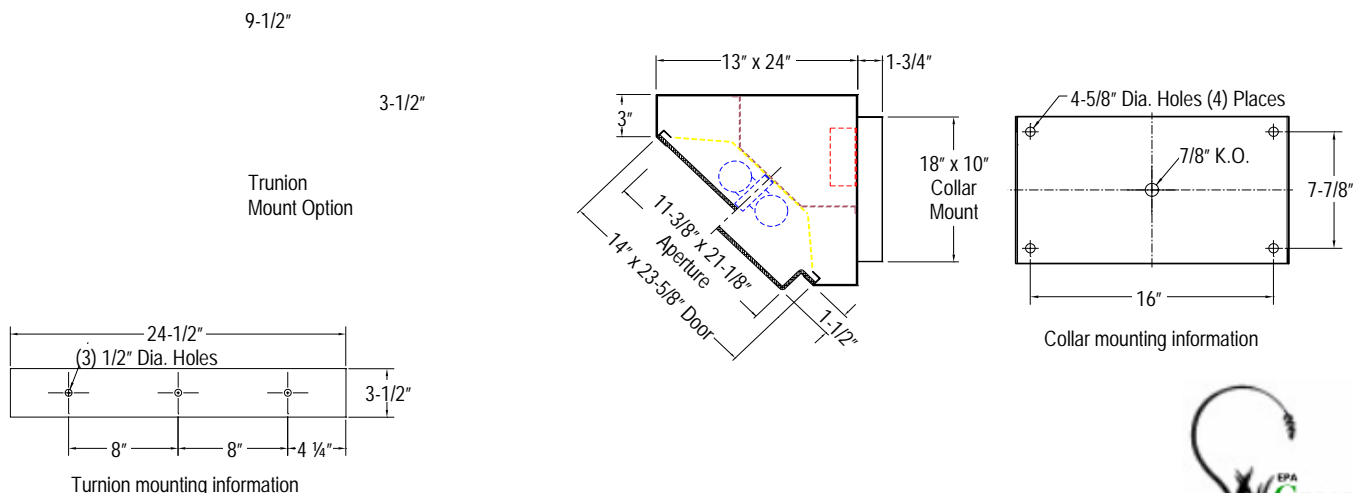
Use the table below to choose the SCR series fixture of your choice. Select a number from each list that corresponds to a specific feature unique to your desired requirements.

EXAMPLE: SCRS040BL= Wall mount, clear lens, 100W ICETRON® lamp and ballast textured black.

SCR X X X 0 X

Mounting System	Lens Material	Wattage / Ballast ICETRON® Lamp	Color
S= Wall or ceiling mount	0= Clear tempered glass lens.	4= 100W / 100W ballast 8000 lumens.	BZ= Textured Bronze
T= Adjustable trunion mount	1= Tempered prismatic Corning #73 lens.	5= 100W / 150W ballast 11000 lumens.	BL= Textured Black
	2= Prismatic drop acrylic lens.	6= 150W / 150W ballast 12000 lumens.	W= Sky White
	3= Prismatic drop polycarbonate lens.	Wattage QL Induction Lamp	SD= Silver
		7= 55W Induction lamp 3500 lumens.	Other Consult Factory
		8= 85W induction lamp 6000 lumens.	
		9= 165W induction lamp 12000 lumens.	

DIMENSIONAL INFORMATION



3254 North Kilbourn Avenue Chicago, Illinois 60641-4505
Phone 773-427-7000 Fax 800-217-1260 www.escolighting.com

