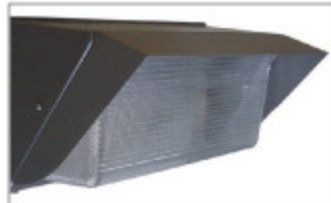


Wire Guard Option  
Cat.# WP708WG



Visor Option  
Cat.# WP708V



**Application:** Ideal for parking areas, entrances, walkways, underpasses, loading docks and tunnels.

### Specifications

**Housing:** Heavy duty die cast aluminum construction with corrosion resistant hardware. See finish note.

**Door Frame:** Heavy duty die cast aluminum, one piece silicone gasket, seals door frame to housing. See finish note.

**Lens:** Impact resistant borosilicate glass, silicone caulked to door frame.

**Reflector:** Anodized aluminum, designed for maximum efficiency.

**Ballast:** Pre-wired C.W.A., H.P.F. core and coil with capacitor.

**Lamp:** Clear mogul base, (by others).

**Lamp Holder:** High heat 4 K.V. rated, w/nickel plated copper screw shell, spring loaded center contact, lamp grips, SF-2 leads (200? C). Impregnated gasket.

**Finish:** Dark Bronze, detergent cleaned, prime coated. Chip resistant powder urethane polyester coating, electrostatic applied and baked.

**Photometric Information:** Contact factory.

**Labels:** U/L, CU/L listed suitable for wet location. I.B.E.W. labeled.

*SPECIFICATIONS SUBJECT TO CHANGE WITHOUT NOTICE*

### Ordering Information

Catalog Number	Watts	Light Source
GSM70817	250	HPS
GSM70818	400	HPS
GSM70827	250	MH
GSM708225	250	MH <small>PULSE START</small>
GSM708232	320	MH <small>PULSE START</small>
GSM708235	350	MH <small>PULSE START</small>
GSM70828	400	MH
GSM708240	400	MH <small>PULSE START</small>