



SPECIFICATIONS

Housing: Precision die cast aluminum with internal rib design to prevent wall distortion or stress sagging; built-in hinge. Internally mounted AC axial fan with die-cast aluminum housing, and thermoplastic impeller. Two 1" louvered aluminum vent plugs for maximum heat dissipation. See finish note.

Door Assembly: Precision die cast aluminum doorframe overlaps the housing edge and has an integral grooved one-piece silicone gasket system that seals the door to the housing. Precision cut clear tempered lens fits inside a raised lip to prevent shifting, is silicone caulked to doorframe and held down with 4 "Z" clips and stainless steel screws. See finish note.

Reflector: Computer generated one-piece specular aluminum, 82% reflective.

Ballast: OSRAM SYLVANIA QUICKTRONIC® high frequency, 120-277 volt, electronic ballast.

Lamp: SYLVANIA ICETRON®, 5000k lamp from OSRAM SYLVANIA. Inductively coupled electrodeless fluorescent lamp with average rated life of 100,000 hours.

Adjustable Slip Fitter: (Standard) Cast aluminum adjustable slip fitter standard. Fits over 2-3/8" pole or tenon with locking rotor plate from 90° to 180°. Enclosed and gasketed internal chamber.

Adjustable Slip Fitter For 1.9" Ø Steel Conduit: (Optional) Die cast aluminum with locking rotor plate, rotates 180°. Steel pipe insert for 1.9" diameter steel conduit, locks in place with 8-5/16" cup point stainless steel screws. Internal "O" ring gaskets. External gasket, between housing and slip fitter, seals slip fitter to housing.

Arm Mount: (Optional) 6" or 10" long extruded aluminum arm with gasketing for pole and fixture. Finished same as housing. Finished same as housing. See finish note.

Yoke Mounting: (Optional) Steel adjustable yoke. Finished same as housing. See finish note.

Wall Bracket Assembly: One-piece cast aluminum bracket /arm assembly with access plate for wire inspection. Cast aluminum, wall mounting plate with 1/4" thick neoprene gasket. Quick disconnect wiring harness. Esco's **EZ5 Mounting System** allows the contractor to install the fixture in 5 minutes or less. Finished same as housing. See finish note.

Finish: Detergent cleaned with iron phosphate and chromic acid rust inhibitor. Chip resistant powder urethane polyester coating, electrostatic applied and baked. Standard colors are textured black, textured bronze and white. Custom colors are available. Consult factory or sales representative.

Labels: I.B.E.W., ETL / CETL listed. Suitable for wet location.

Fixture Warranty: The fixture mechanics are guaranteed to be free from defective material and workmanship, under normal installation and operating conditions, for five years from date of shipment from the factory. See General Terms and Conditions.

Photometric Information: Contact factory.

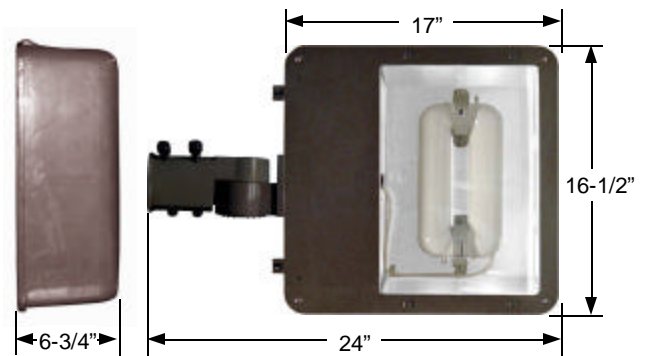


Face Down
Outdoor Area light

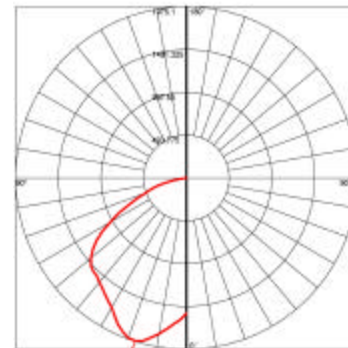


Face Up
Billboard / Overhead Sign Light

DIMENSIONS



PHOTOMETRICS



SPECIFICATIONS SUBJECT TO CHANGE WITHOUT NOTICE



WBE City of Chicago Certified

3254 North Kilbourn Avenue Chicago, Illinois 60641-4505
Phone: 773-427-7000 Fax: 800-217-1260 www.escolighting.com
Established 1975





HOW TO ORDER

Catalog Number	Lamps	Ballast	Initial Lumens	Color Temp
FLiZ53516	100W	ICE/150W	13,000	3500k
FLiZ54116	100W	ICE/150W	13,000	4100k
FLiZ55016	100W	ICE/150W	12,700	5000k

Color Suffix

BZ=Textured Bronze W=Sky White BL=Textured Black Other=Consult Factory

Voltage Suffix

120V = 1 277V = 4 480V = 5

EXAMPLE ORDER NUMBER: FLiZ55016S-4 = ICETRON induction 100 watt lamp, 150 watt ballast, 5000k, with standard adjustable slip fitter, 480 volt.

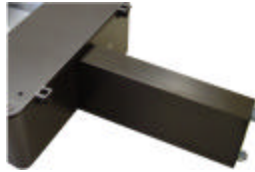
MOUNTING OPTIONS



(STANDARD)
**ADJUSTABLE
 SLIP FITTER**
 Suffix catalog
 number with **S**



**ADJUSTABLE
 YOKE MOUNT**
 Suffix catalog
 number with **Y**



**EXTRUDED
 ALUMINUM ARM**
 Suffix catalog number with
A6" or A10"



**CAST ALUMINUM
 WALL MOUNT**
 Suffix catalog
 number with **W**

D.O.T. OPTION

D.O.T. OPTION Includes;

Ballast: OSRAM SYLVANIA QUICKTRONIC® high frequency 150W, 120-277 volt, electronic ballast and a "GE PRO LINE" 480 volt step down auto-transformer.

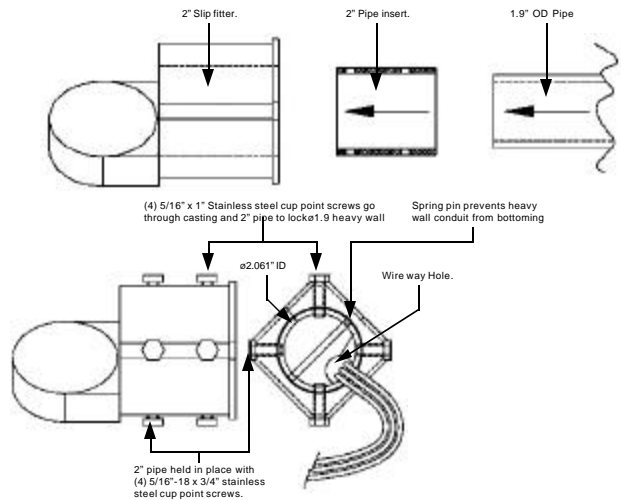
Lamp: SYLVANIA ICETRON® 100 watt, 5000k lamp from OSRAM SYLVANIA. Inductively coupled electrodeless fluorescent lamp with average rated life of 100,000 hours.

Adjustable Slip Fitter: Die cast aluminum with locking rotor plate, rotates 180°. Steel pipe insert for 1.9" diameter steel conduit, locks in place with 8-5/16" cup point stainless steel screws. Internal "O" ring gaskets. External gasket, between housing and slip fitter, seals slip fitter to housing (See Illustration).

Finish: Gray-RAL 7040, detergent cleaned with iron phosphate and chromic acid rust inhibitor, resistant chip resistant powder urethane polyester coating.

Replace FLiZ catalog number with **FLiR550SGF1.5-5**

Adjustable Slip Fitter For 1.9"Ø Steel Conduit



ACCESSORIES



Fuse and Fuse Holder

Add suffix "**F**"
 to order number.*



Photo Control

Add suffix "**PC**"
 to order number.*

*120 or 277 volt must be specified when ordering a Photo Control or Fuse and Fuse Holder.

WBE City of Chicago Certified

3254 North Kilbourn Avenue Chicago, Illinois 60641-4505
 Phone: 773-427-7000 Fax: 800-217-1260 www.escolighting.com
 Established 1975

