



SPECIFICATIONS

Housing: Die cast aluminum with internal rib design to prevent wall distortion or stress sagging; built-in hinge. Finished architectural bronze. See finish note.

Door Assembly: Die cast aluminum, clear tempered lens, silicone caulked to frame plus eight hold down clips, integral silicone door frame gasket to complete lifetime seal. Finished architectural bronze. See finish note.

Reflector: Computer generated one-piece semi-specular aluminum for maximum efficiency.

Ballast: High frequency electronic ballast 100W 120—277V. Contact factory for other voltages.

Lamp: Fulham High Horse electrodeless fluorescent lamp with average rated life of 100,000 hours.

Adjustable Slip Fitter: (Standard) Cast aluminum adjustable slip fitter standard. Fits over 2" pole or tenon with locking rotor plate from 90° to 180°. Enclosed and gasketed internal chamber.

Arm Mount: (Optional) 6" or 10" long extruded aluminum arm with gasketing for pole and fixture. Finished same as housing. See finish note.

Yoke Mounting: (Optional) Steel adjustable yoke. Finished same as housing. See finish note.

Wall Bracket Assembly: One-piece cast aluminum bracket /arm assembly with access plate for wire inspection. Cast aluminum, wall mounting plate with 1/4" thick neoprene gasket. Quick disconnect wiring harness. Esco's **EZ5 Mounting System** allows the contractor to install the fixture in 5 minutes or less. Finished same as housing. See finish note.

Finish: Detergent cleaned with iron phosphate and chromic acid rust inhibitor, resistant chip resistant powder urethane polyester coating, electrostatic applied and baked. Standard colors textured black, sky white and textured bronze. Custom colors are available. Consult factory or sales representative.

Labels: I.B.E.W. labeled, ETL / CETL listed. Suitable for wet location.

Fixture Warranty: The mechanics are guaranteed to be free from defective material and workmanship, under normal installation and operating conditions, for five years from date of shipment from the factory. See general terms and conditions.

Maximum Ambient Temperature: Maximum 118°F.

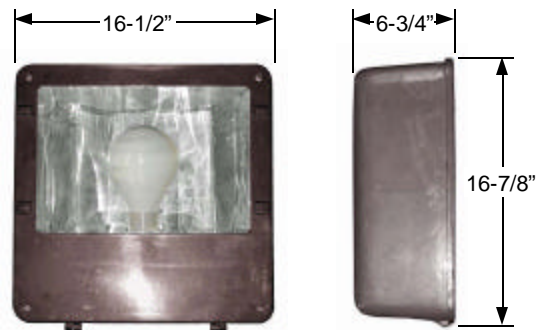
Photometric Information: Contact factory.

SPECIFICATIONS SUBJECT TO CHANGE WITHOUT NOTICE

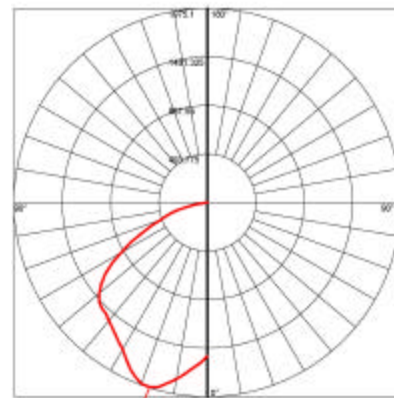


Shown with standard Adjustable Slip Fitter

DIMENSIONS



PHOTOMETRICS



WBE City of Chicago Certified

3254 North Kilbourn Avenue Chicago, Illinois 60641-4505
 Phone: 773-427-7000 Fax: 800-217-1260 www.escolighting.com
 Established 1975





HOW TO ORDER



Catalog Number	Lamps	Initial Lumens	Ballast	Color Temp
FLBF85016	85W	5,950	85W	5000
FLBF105016	100W	7,000	100W	5000

EXAMPLE ORDER NUMBER: FLBF85016SAB= Fulham induction 85 watt lamp, 5000k, with adjustable slip fitter.

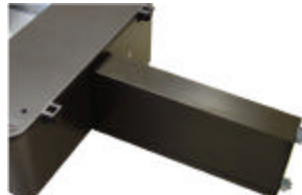
4 MOUNTING OPTIONS



Adjustable slip fitter. Suffix catalog number with **SAB** (Standard).



Adjustable yoke mount. Suffix catalog number with **YAB**.



Extruded aluminum arm. Suffix catalog number with **AAB 6"** or **AAB 10"**.



Cast aluminum wall mount. Suffix catalog number with **WAB**.

ACCESSORIES



Fuse and Fuse Holder
Add suffix "F" to order number.



Photo Control
Add suffix "PC" to order number.
*Specify 120v or 277v



WBE City of Chicago Certified

3254 North Kilbourn Avenue Chicago, Illinois 60641-4505
Phone: 773-427-7000 Fax: 800-217-1260 www.escolighting.com
Established 1975

