

SPECIFICATIONS

Housing: Heavy duty die cast aluminum construction with corrosion resistant hardware. See finish note.

Door Frame: Heavy duty die cast aluminum, one piece silicone gasket, seals door frame to housing. See finish note.

Lens: Impact resistant clear tempered glass, silicone caulked to door frame.

Reflector: Anodized aluminum, designed for maximum efficiency.

Ballast: Pre-wired C.W.A., H.P.F. core and coil with capacitor. Quick disconnect wiring harness for supply wire to fixture connection.

Lamp: Clear medium base, (by others).

Lamp Holder: High heat 4 K.V. rated, w/nickel plated copper screw shell, spring loaded center contact, lamp grips, SF-2 leads (200° C). Impregnated gasket.

Finish: Dark Bronze, detergent cleaned, prime coated. Chip resistant powder urethane polyester coating, electrostatic applied and baked.

Photometric Information: Contact factory.

Labels: U/L, CU/L listed suitable for wet location.

I.B.E.W. labeled.

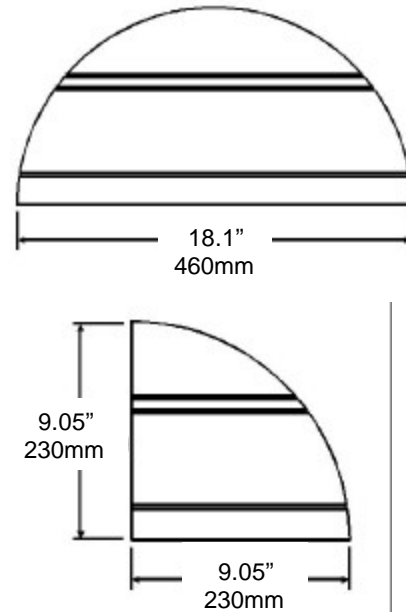
SPECIFICATIONS SUBJECT TO CHANGE WITHOUT NOTICE



Applications

Ideal for parking areas, entrances, walkways, building facades.

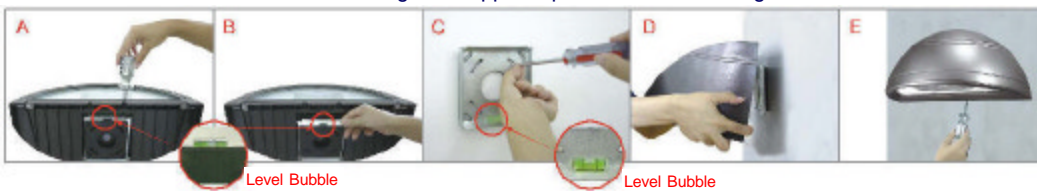
DIMENSIONS



HOW TO ORDER

Catalog Number	Watts	Light Source	Catalog Number	Watts	Light Source
Forward Throw Reflector			Wide Distribution Reflector		
GSM30312FT	50	HPS	GSM30312WT	50	HPS
GSM30313FT	70	HPS	GSM30313WT	70	HPS
GSM30314FT	100	HPS	GSM30314WT	100	HPS
GSM30315FT	150	HPS	GSM30315WT	150	HPS
GSM30322FT	50	MH	GSM30322WT	50	MH
GSM30323FT	70	MH	GSM30323WT	70	MH
GSM30324FT	100	MH	GSM30324WT	100	MH
GSM30325FT	150	MH	GSM30325WT	150	MH
GSM30326FT	175	MH	GSM30326WT	175	MH

EZ5 Minute mounting with supplied quick disconnect wiring harness.



3254 North Kilbourn Avenue Chicago, Illinois 60641-4505
Phone: 773-427-7000 Fax: 800-217-1260 www.escolighting.com

A Woman-Owned Business
Established 1975

